



Product Information

Short Description

Window Foil Exterior is open to water vapour diffusion and consists of a polypropylene film, covered with a butyl and self-adhesive layer on one side, or butyl and self-adhesive layers on alternate sides.

Window Foil Exterior is suitable as a sealing between window frames and adjoining material e. g.

- in slab constructions that are later fitted with a heat insulating sandwich system or a curtain wall
- as a surface seal underneath an exterior windowsill

Material

Polypropylene film, covered with a butyl and self-adhesive layer on one side, or butyl and self-adhesive layers on alternate sides.

Colours

- Front: grey
- Back: white

Product Advantages

- Open to water vapour diffusion
- Driving rain resistant
- Simple mounting because of high adhesive strength of the butyl or self-adhesive layer

Availability

On rolls, self-adhesive on one side.

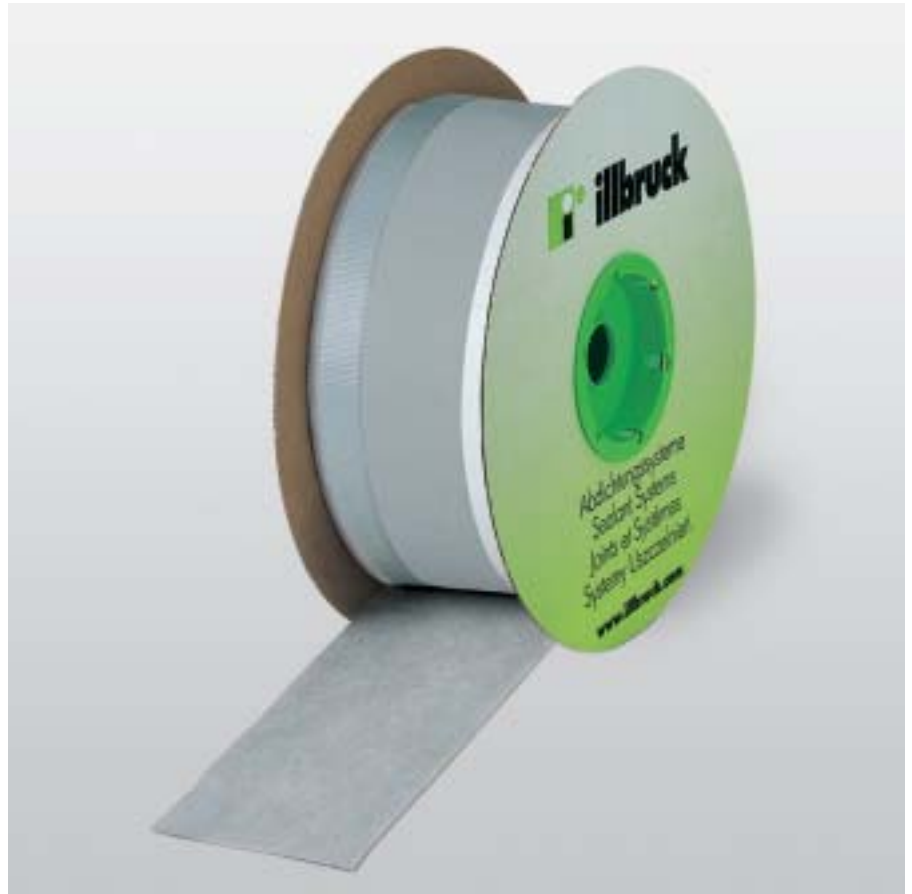
Dimensions/Sizes

Roll length: 25 m

Order No.	Width in mm	Rolls per Carton	Content per Carton in m
E 50	50	7	175
E 70	70	5	125
E 100	100	3	75
E 150	150	2	50
E 200	200	2	50
E 300	300	1	25
E 400	400	1	25
W 70*	70	4	100
W 100*	100	3	75

* Alternate sides: self-adhesive along the edge of one side and a wider butyl strip on the other edge of the other side (i. e. diagonally opposite).

Additional tape widths are available on request.



illbruck Window Foil Exterior

Technical Data illbruck Window Foil Exterior

	DIN	Classification
Building material class	4102	B2 (normal flammability)
Resistance to water vapour diffusion	52 615	$\mu = 93$
Water vapour permeability		$sd = 0.04 \text{ m}$
Adhesive strength of the butyl layer		12 N/25 mm
Ageing- and UV-resistance		approx. 8 months
Driving rain resistance	1027	600 Pa
Compatibility with traditional materials	52 452	given
Temperature resistance		-40 °C to +100 °C
Application temperature		+5 °C to +50 °C
Shelf life		1 year

Application Window Foil Exterior

Preparation

The adhering surfaces must be dry, free of oil, grease, dust and any other materials that could impair adhesion. A first coating of illbruck Butyl- & Bitumen-Primer is recommended on very porous surfaces.

Application

The grey side of the foil should always face the side of the weather.

- Remove the protective paper from the self-adhesive side.
- Apply the self-adhesive edge onto the window frame (Fig. 1).
- Remove the protective paper from the butyl strip (wall edge) (Fig. 2).
- Apply the tape onto the surface and remove the creases of the tape carefully (perhaps with a pressure roller) (Fig. 3).
- If foils overlap, illbruck Butyl Tape can be positioned in between, adhere the tape as soon as possible (do not apply to only one edge).

Special Advice

If Window Foil Exterior is covered with insulating sheets, a mechanical fixing is necessary. Consult with illbruck's applications technology in case of load by shear force.

illbruck Butyl- & Bitumen-Primer (Wash Primer)

Curing time approx. 30 – 60 min. depending on temperature. Coverage: approx. 125 ml/m² or approx. 200 ml/l respectively assuming a width of 4 cm (depending on the porosity of the surface). illbruck Butyl- & Bitumen-Primer is supplied in cartons containing 12 x 1-litre or in 5-litre cans.

illbruck Product Range

- illbruck Joint Sealant Tapes
- illbruck PU-Foams
- illbruck Butyl Tapes
- illbruck Sealant Foils
- illbruck Special Products
- illbruck Accessories



Fig. 1



Fig. 2



Fig. 3



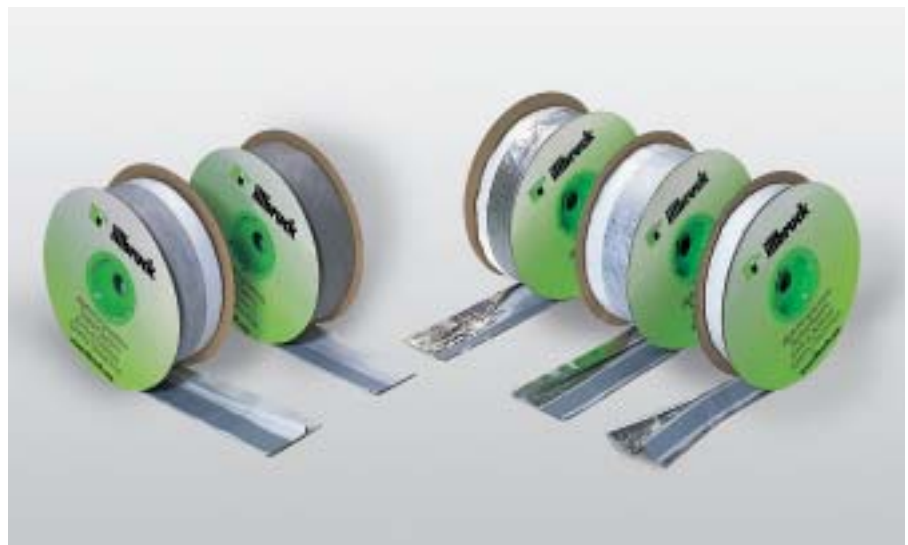
Fig. 4

Service

illbruck's application technology is always available to support and advise you on request.

Additional information

The afore-mentioned information only contains general recommendations. Due to the many different conditions in which applications take place, on which we can exert no influence, and the multiplicity of many different materials, extensive preliminary testing is recommended to examine the characteristics of the material for each specific application.



illbruck Sealant Foil-Range

Manufacturer's data as of 04/03. Subject to technical modifications.

illbruck Bau-Technik GmbH · Burscheider Straße 454 · D-51381 Leverkusen · Tel. + 49 (0) 21 71-391-0 · Fax + 49 (0) 21 71-391-586
www.illbruck.com · e-mail: sealantsystems@illbruck.com