

Introducing RF1®

The versatile new RF1® fire resistant glazing system, has been developed in response to strong demand for a well designed, bead-applied glazing solution for 60 minute applications, that delivers on style.

Lorient's RF1® glazing system comprises:

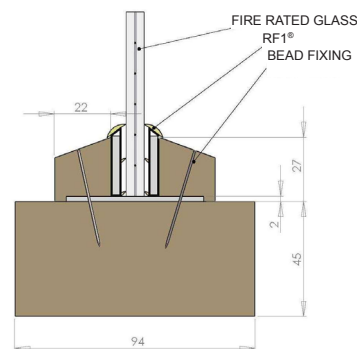
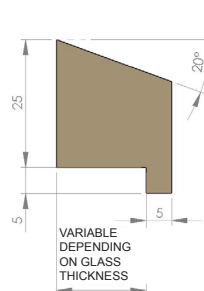
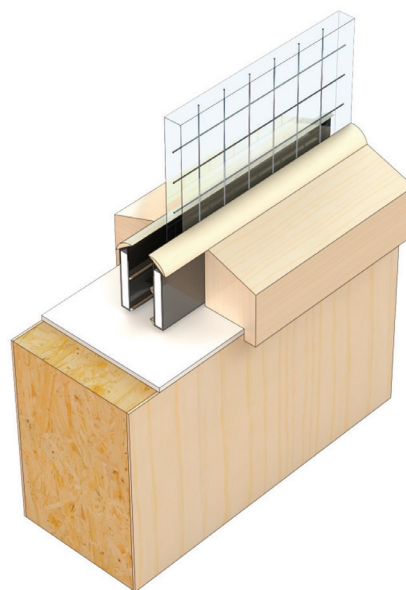
- A pair of bead applied intumescent glazing seals (RG2704).
- A sodium silicate intumescent liner (B25402).

To be used with appropriate hardwood beads (which Lorient can supply).

RF1 comes with a self-adhesive backing for ease of application.

Specification:

- Its unique design allows tolerances (flexibility) between door, bead and glass thicknesses to be accommodated.
- Fire resistance provided for 60 minute applications for doors and screens.
- Successfully tested for fire in accordance with BS 476: Pt.22: 1987 (Approved Document B).
- Premium aesthetics – the caps are the only visible element when fitted – and are available in a variety of colours to harmonise with the door.
- For use with pins which are discreet and quick to fix or alternatively secure with screws.



Suitable for use with a variety of glass types*:

Pyroshield® 2	7mm Pyrostem®
Pyrobelite® 12	Pyran-S®
Pyroguard® 11.4mm c/w	5mm Firelite®
13mm Pyrodur®	Pyranova® 15-S2
15mm Pyranova® 30 – S3.0	15mm Pyroguard® Insulation '30-15'

*Please refer to CF5033 for more information.

Vision panels: For use with square / rectangular vision panels (as standard). Maximum glass size of 1770mm x 500mm (subject to glass type) – meeting the requirements of Approved Document M.

Standard profile lengths: 2.1m.

Standard finishes: Black profile with white, cream, grey, light brown, dark brown and black caps.

Please refer to our Technical Services team on **+44 (0)1626 834252** for further details.



Lorient Polyproducts Ltd