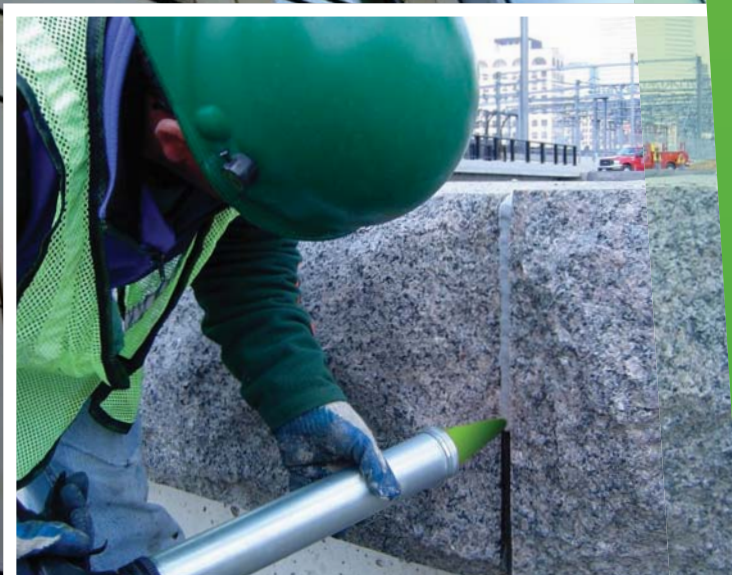



## Façade & Fit Out

Jointing in Building  
Construction &  
Interior Design



 **National  
Seal Systems  
Limited**

Unit 210 holly road, Western Industrial Estate.  
Naas Road, Dublin12.  
Ph. 01-424 7200 email: [info@nationalseal.ie](mailto:info@nationalseal.ie)  
Fax. 01-4502371 Web: [www.nationalseal.ie](http://www.nationalseal.ie)

A close-up photograph of two men wearing yellow hard hats, looking upwards and to the right. The man on the left is in profile, wearing a blue shirt and a green plaid shirt. The man on the right is also in profile, wearing a dark blue shirt. The background is dark and out of focus.

**illbruck offers you a wide range of high-quality products for perfect results in your projects when it comes to sealing and bonding. Whether it be windows, façades, interior design, the exterior of a large construction project or a small restoration project, illbruck has the right solution.**

**As a link between different building components, the joint fulfils a function of connecting but also sealing at the same time. It is subject to high stresses in terms of structural physics and the atmosphere. With 60 years of experience, illbruck offers perfect joint solutions for outside and inside that withstand even heavy use reliably and over the long term.**

**illbruck is a brand of tremco illbruck, a European manufacturer and service provider of high-performance building materials.**



04 The Faster Way to the Right Solution

06 Problem Free Sealing

08 **Façades**

10 Natural Stone Façades

12 Concrete Façades

14 Brick Façades

16 Glass Façades

18 Modern Façades

20 **Industrial & Commercial Flooring**

22 **Difficult Substrates**

**Product Selection**

24 Sealants

32 Tapes & Profiles

33 Accessories

34 Primers/Cleaners

37 TREMCO SSG Sealant

38 Nullifire Fire-Rated Sealants

40 **Primer Guide**

42 Mechanical Stress & Specification

## The Faster Way to the Right Solution

### Colours and shortcuts identify each product

illbruck has expanded its product range. From now on, you can find everything you need for sealing and bonding windows, façades, interiors and exteriors – all under one name: illbruck.

New colour-coding makes it even easier to find the product you need: Each application field has its own colour scheme

and each technology its own shade of colour within this scheme. The colour code is always the same: in this catalogue, on the product or in all promotional materials!

As before, the technologies continue to be identified by a combination of letters (as part of the shortcut).



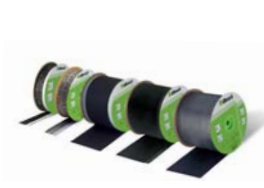
Adhesives

CT	Contact
CY	Cyanoacrylate
MT	Grab Adhesives
OT	Others
PU	Polyurethane
SP	Hybrid
WD	PVA



Foams

FM
----



Membranes

ME
----



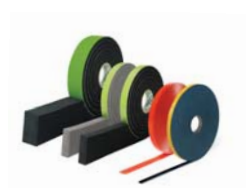
Profiles

PR
----



Sealants

FA	Neutral Silicone
FS	Neutral Silicone
GS	Acetoxy Silicone
LD	Acrylic
OS	Others
SB	Butyl
SP	Hybrid



Tapes

TN	Others
TP	Impregnated



Accessories

AA/AB/AT/AW
-------------

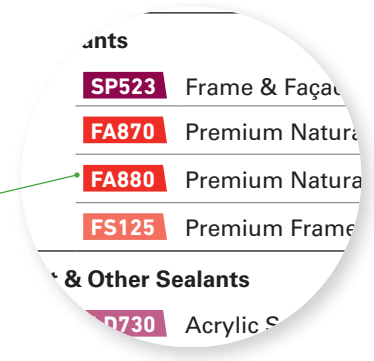
## In the Picture - Faster Clear and informative packaging design

The new and improved packaging design puts you in the picture faster. Precise and instantly recognisable colour shades and icons clearly identify each product. This labelling runs throughout all forms of marketing materials – from packaging and website design to catalogues, brochures and product datasheets.

### Product datasheet



### Product overviews in brochures



### Area of application

Simple pictograms explain where to apply the product.

### Major benefits

A second type of pictogram will show the main benefits/properties at a glance.



### Online product search





## Problem Free Sealing

**Silicone and hybrid solutions offer the perfect sealing for most applications and tremco illbruck keep stocks of products to suit most applications in a variety of colours.**

### Easy to Gun Out . . . Superb Looking Finish

illbruck sealants are designed to be easy to gun out and we have a range of different geared application guns to make the sealant even more of a pleasure to use.

Tradesmen will love how easy the products are to tool off, plus this can be enhanced by using our special smoothing agent with some products. A variety of smoothing tools will help you create the perfect joint in different profiles.

### Practical

It is not our wish to tell the professional applicator how to do his job. We aim to enhance the skills of the applicator by providing the finest sealants and accessories to do the job easily.

### Economical

illbruck's premium brand puts quality first. illbruck's German engineered products are at the heart of our manufacturing. Our technical know-how and wide range of products ensures quality always pays off.

### Safe and Reliable

illbruck products have all of the required certification and have won multiple awards. The brand provides a safe and secure choice.

### Site Evaluation

For the discerning specifier that chooses illbruck, inspection reports are available with most products to ensure application without risk. illbruck products comply with current regulations.

Healthy living, sustainability and ecology play a central role.

There must be no health risks arising during installation or to the subsequent consumer. illbruck products are environmentally compatible and make up a set of low or very low emission products.

### Outside and Inside

illbruck brings to you as a market leader, excellence in façade sealing which continues inside the building.

## Façades

Joints are an increasingly important detail of façades. Whilst catering for movement, the joint must look aesthetically pleasing and blend in with the building.

Subjected to weathering, pollution and movement of the joint, the sealant must cope with stress and strains. If the sealant does not perform, this could affect the functionality of the joint and the entire façade.

The sealed joint must continue to function over the long term.

illbruck sealants are purpose designed for different applications on façades and designed to withstand all of the above.







## Natural Stone Façades

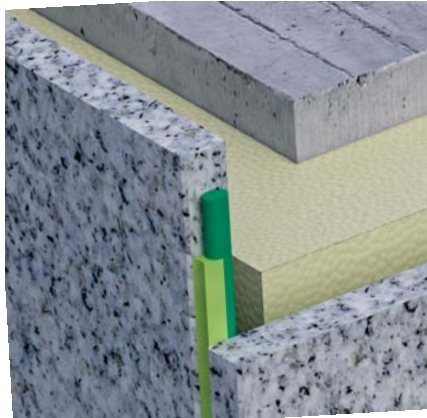
Natural stone is a beautiful and an aesthetically pleasing material with which to construct a façade; however, the surface is very easily spoilt when the wrong type of sealant is used. Oils and plasticisers in the sealant can cause unsightly migratory staining. This is often confused with hydration staining. Sometimes migratory staining is known as 'Picture Framing' as it creates a dark stain about 10-20 mm around the edge of the joint. illbruck stone sealant accommodates movement, keeps the weather out and is available in numerous colours to suit the type of stone you are working with.

Avoid migratory staining by insisting on a non-staining sealant, whereby all the potential staining ingredients have been excluded during the manufacturing process. illbruck stone sealant has a high notch resistance, and can be used in paved areas as well as façades. A fungicide also allows the stone sealant to be used in bathrooms and in other areas exposed to water.

### The Right Solution

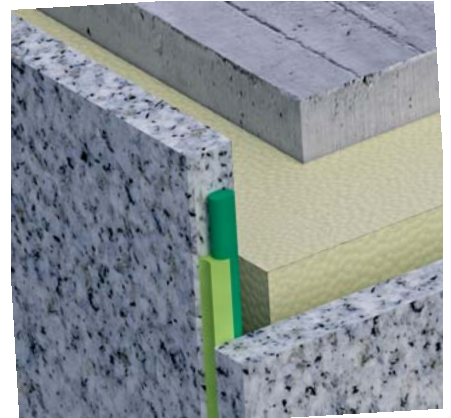
- FA870 Natural Stone Silicone
- FA880 Natural Stone Silicone Matt
- SP525 Hybrid Frame & Façade Sealant
- TP600 Compriband 600

### Natural Stone Façade



FA870 Natural Stone Silicone  
FA880 Natural Stone Silicone Matt  
(with backer rod)

### Natural Stone Façade



SP525 Frame & Façade Sealant  
(with backer rod)

### Stone Blockwork Façade



TP600 Compriband 600





## Concrete Façades

Whether tilt up construction panels, joints between in-situ poured concrete or precast panels, modern concrete finishes can present difficulties. Exposed aggregate, honed or polished/coloured surfaces mean that modern aesthetics place extra demands on the specifier.

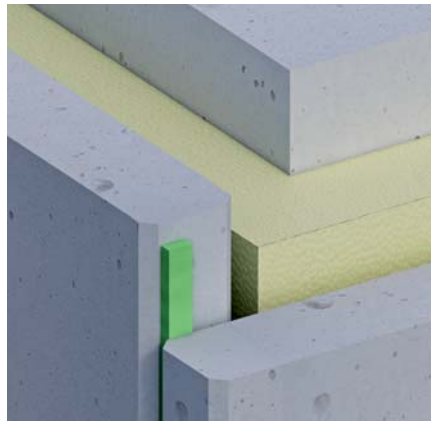
Joints are always of key importance in order for the building to function correctly. Additionally, insulation behind the concrete façade needs to be protected from the ingress of water.

So, the sealant needs to be flexible and weatherproof. Water penetrating the structure from inside the joint can lead to salt attack due to road salt, frost damage and other serious problems. Insist on illbruck and design out your concerns.

### The Right Solution

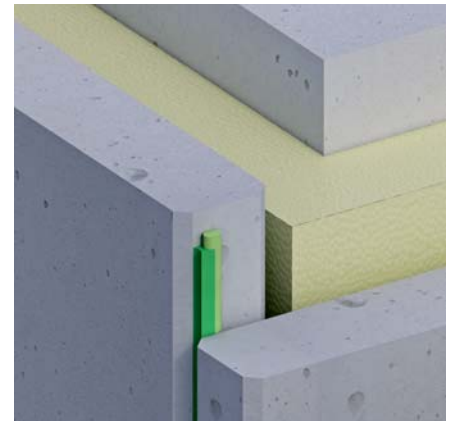
- SP525 Frame & Façade Sealant
- SP540 Floor Joint Sealant
- FA870 Natural Stone Silicone
- FA880 Natural Stone Silicone Matt
- FS125 Frame & Façade Silicone
- FA101 Frame Silicone
- TP600 Compriband 600

### Back Ventilated Prefabricated Construction



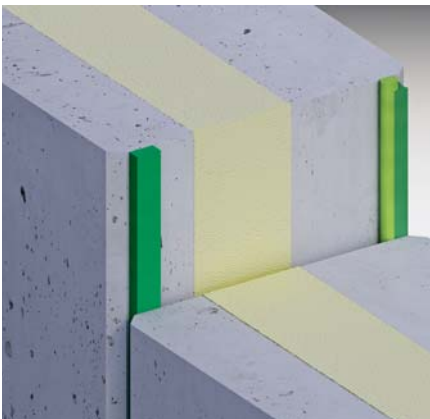
TP600 Compriband 600

### Back Ventilated Prefabricated Construction



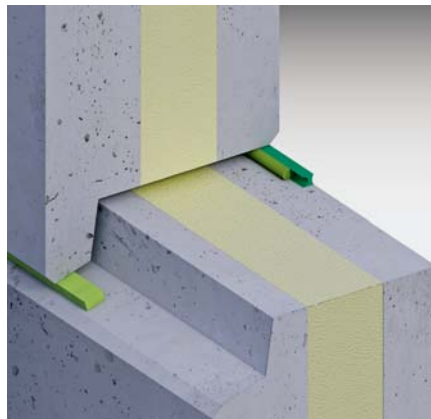
SP525 Construction Joint Sealant  
FA870 Natural Stone Silicone  
FA880 Natural Stone Silicone Matt  
(with backer rod)

### Sandwich Construction



SP525 Construction Joint Sealant  
FA870 Natural Stone Silicone  
FA880 Natural Stone Silicone Matt  
(with backer rod) - Inside  
TP600 Compriband 600 - Outside

### Sandwich Construction



SP525 Construction Joint Sealant  
FA870 Natural Stone Silicone  
FA880 Natural Stone Silicone Matt  
(with backer rod) - Inside  
TP600 Compriband 600 - Outside

### Prefabricated Construction



TP600 Compriband 600



## Brick Façades

A large wall constructed in brickwork will often necessitate a wide expansion joint. It is important that if a sealant is used, it does not slump immediately after application. Careful choice of colour will make the joint blend into the building. Another alternative to a sealant would be to use TP600 impregnated foam which will accommodate high degrees of movement in large brickwork façades.

Windows in a brick surround must be sealed correctly. Movement accommodation and weather sealing must work in tandem to form a neat joint around the frame.

### The Right Solution

- FS125 Frame and Façade Silicone
- SP525 Frame and Façade Sealant
- FA870 Natural Stone Silicone
- FA880 Natural Stone Silicone Matt
- FA160 Lead Sealant
- TP600 Compriband 600

### Expansion Joint



TP600 Compriband 600

### Expansion Joint



FS125 Frame and Façade Silicone  
SP525 Construction Joint Sealant  
FA870 Natural Stone Silicone  
FA880 Natural Stone Silicone Matt  
(with backer rod)

### Edge Joint



TP600 Compriband 600

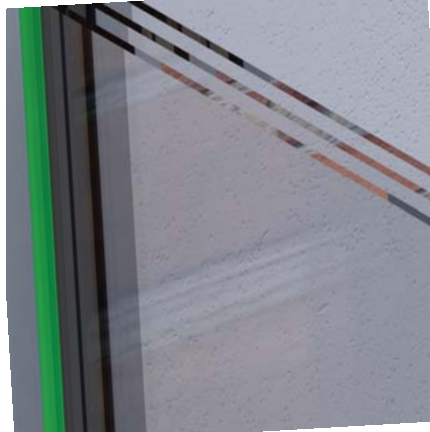
## Glass Façades

### Weather Sealing

Weather sealing is important in a number of areas. As well as keeping rain and drainage water out, the sealant must resist UV and accommodate movement as the glass contracts and expands.

### The Right Solution

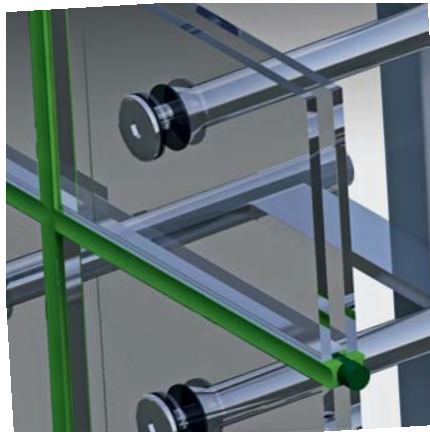
- FS125 Frame and Façade Silicone Sealant
- FA101 Frame Silicone Sealant
- SP525 Hybrid Frame & Façade Sealant
- TREMCO SG300 Spectrem 2



FA101 Frame Silicone Sealant

### Structural Silicone Glazing Façades (SSG)

SSG façades must endure high strains. The silicone adhesives and sealants used here must seal the joints of the panes and permanently connect the building components. They must be ozone- and UV-resistant, even despite extreme weather, and exhibit high mechanical strength. They must not affect the glass surface or the sealants of the edge seal for the insulating glass. illbruck has developed solutions that meet all of these requirements.



TREMCO SG300 Spectrem 2  
(with backer rod)

### The Right Solution

- TREMCO SG300 Spectrem 2





## Modern Façades

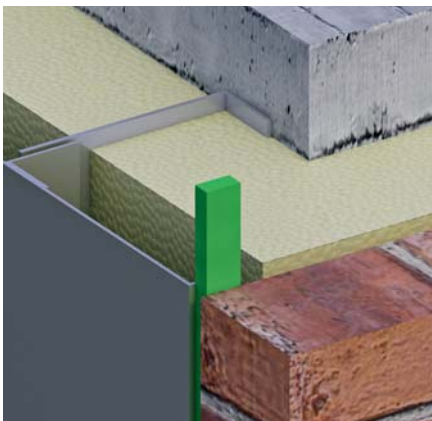
These days, a multitude of substrates can be used on façades. From copper to laminated glass to reconstituted bricks, each material will expand and contract at different rates. Sometimes this can be more challenging than when using conventional methods of construction.

Trying to seal between crumbling vintage sandstone and polyester coated aluminium? No problem to tremco illbruck who have a product range at their disposal to make such issues a breeze. Such challenges also can present finishing problems as the applicator tries to create a neat joint against an irregular substrate such as exposed aggregate concrete or antique limestone — illbruck has the answers.

### The Right Solution

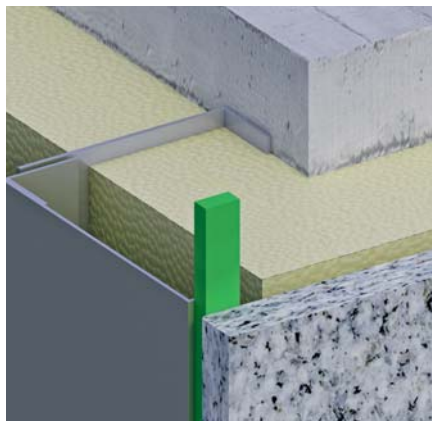
- SP525 Frame & Façade Sealant
- FS125 Frame & Façade Silicone
- FA101 Frame Silicone
- FA870 Natural Stone Silicone
- FA880 Natural Stone Silicone Matt
- FA160 Lead Sealant
- TP600 Compriband 600

### Metal/Brick Façade



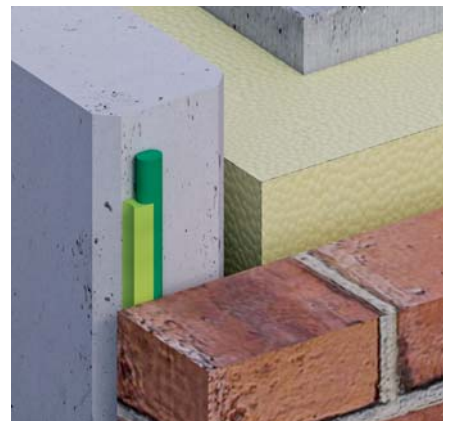
TP600 Compriband 600

### Metal/Natural Stone Façade



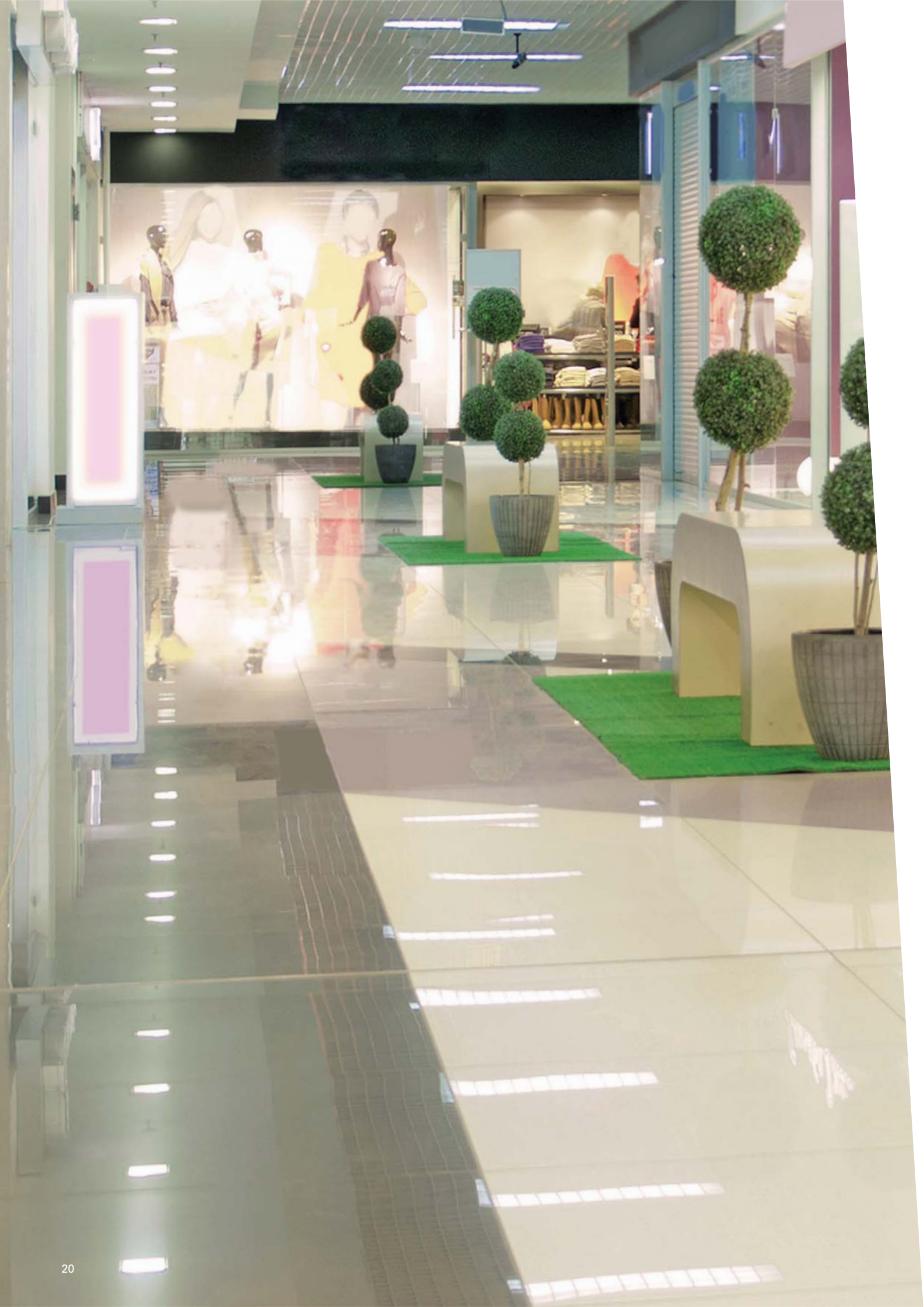
TP600 Compriband 600

### Concrete/Brick Façade



SP525 Construction Joint Sealant  
FS125 Frame & Façade Silicone  
FA101 Frame Silicone  
FA870 Natural Stone Silicone  
FA880 Natural Stone Silicone Matt  
(with backer rod)





## Industrial & Commercial Flooring

In any floor slab, the frequency of joints, joint spacing and joint width must be determined by the specifier.

In commercial flooring, trolleys will transfer load from one slab to the adjacent slab. The joint must be capable of transferring the load — and the sealant must withstand the trolley wheels and movement of the joint.

Stiletto heels are another subject that has to be considered. A terrazzo floor in a shopping mall or paving on an outside walkway are two areas where this is important. The joint must be designed to withstand this and other point loadings.

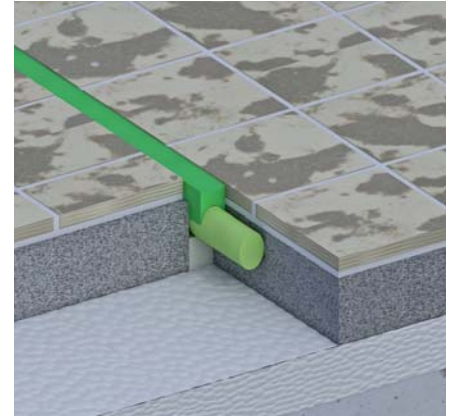
Natural stone flooring presents a further challenge. Conventional sealants can cause unsightly migratory staining — insist on a sealant that will not stain.

### The Right Solution

- FA870 Natural Stone Silicone\*
- FA880 Natural Stone Silicone Matt
- SP540 Floor Joint Sealant
- SP545 Flow Applied Floor Joint Sealant

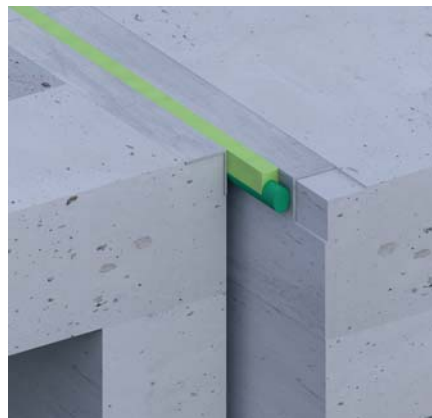
\* Refer to technical for advice on suitable applications.

### Screed Joint



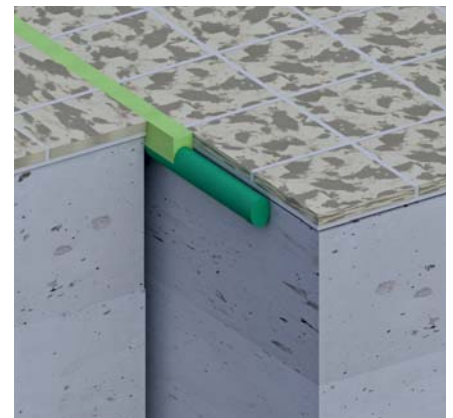
FA870 Natural Stone Silicone\*  
 FA880 Natural Stone Silicone Matt  
 SP540 Floor Joint Sealant  
 SP545 Flow Applied Floor Joint Sealant  
 (with backer rod)

### Concrete Flooring



FA870 Natural Stone Silicone\*  
 FA880 Natural Stone Silicone Matt  
 SP540 Floor Joint Sealant  
 SP545 Flow Applied Floor Joint Sealant  
 (with backer rod)

### Commercial Flooring



FA870 Natural Stone Silicone\*  
 FA880 Natural Stone Silicone Matt  
 SP540 Floor Joint Sealant  
 SP545 Flow Applied Floor Joint Sealant  
 (with backer rod)

## Difficult Substrates - Improving the Adhesion of the Sealant

Due to the huge variety of substrates used today, there are times when extra care needs to be taken. For example, sealants and paints will have difficulty in adhering to self-cleaning glass, modern low energy frame materials, dusty surfaces, oxidised metals or extruded aluminium covered in an oily release agent.

In addition, when heavily exposed to water or other mechanical stress, there are times when the bond between sealant and substrate is of critical importance.

### Cleaners and Primers

Ensure the optimal bond on difficult substrates with the illbruck range of primers and cleaners.

- AT200 General Purpose Cleaner
- AT120 Cleaner/Primer
- AT160 Cleaner/Primer
- AT101 Primer
- AT140 Primer
- AT150 Primer

### Smoothing Agent

Why bother compromising your workmanship by tooling off using whatever is at hand such as washing up liquid and water?

illbruck can provide smoothing agent, an ultra-slippery liquid to get a great finish when tooling off. The cost is minimal. You can spray it on or dip your finishing tools in the liquid

- AA301 Smoothing Agent

### Finishing Tools

The illbruck jointing tool set gives you different shapes to tool off the joint in different profiles.

- AA311 Jointing Tool Set

### Backer rod/Joint Foam

An essential part of forming the joint correctly. illbruck backer rod comes in a variety of sizes to accommodate different joint widths

- PR102 Foam Backer Rod
- TP300 Impregnated Foam Backer Rod Plus
- TP600 Compriband 600

### Sealant Guns

illbruck have the right gun to suit your application. Having the right gun makes application so much easier.

- AA834 Skeleton gun
- AA854 Cartridge Gun PRO
- AA874 Cartridge Gun Ultra
- AA950 Sausage Gun Combi Pro
- AA970 Sausage Gun Combi Ultra
- AA910 Electric Combi Gun
- AA920 Airflow Combi

### Accessories

Nozzles

Nozzle adaptors

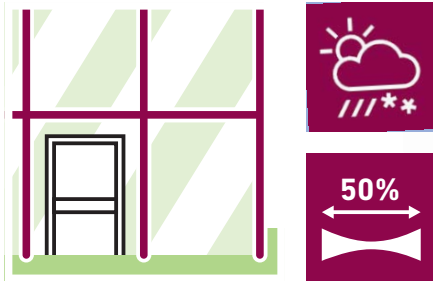
AA400 Anti-Mould Spray





## SP525

### Frame & Façade Sealant



SP525 uses advanced SP polymer technology. It has high movement capability and excellent adhesion to most surfaces. It is ideal for joints in facades, rain screens and curtain walls, perimeter joints around windows, doors & roof lights. It is used in high movement joints (e.g. modular buildings).

SP525 bonds to most types of concrete, aluminium, PVC, stainless steel, galvanized steel, glass, acrylic glass, GRP and other construction materials.

SP525 has low slump properties and excellent UV resistance and is resistant to ageing due to weathering.

#### Product Benefits

- Complies with ISO11600 25LM
- High movement accommodation
- Non-staining formulation — please refer to technical department for further details
- Rapid curing
- UV resistant and resists ageing
- Easily tooled off to a superb finish

#### Packaging

600 ml sausages (20/carton)

#### Colours\*

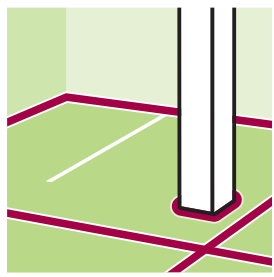


\* Colour swatches are indicative only. For colour samples, please contact our Sales Office on +44 (0)1942 251400.



## SP540

### Floor Joint Sealant



SP540 Floor Joint Sealant is abrasion and vibration resistant, non-yellowing easy to tool, and both UV and weather resistant.

#### Product Benefits

- Isocyanate & silicone free
- Fast curing
- Fast tack-free time
- Permanent elasticity
- High mechanical strength and good abrasion resistance
- Excellent resistance to weathering, ageing and UV exposure

#### Packaging

600 ml sausages (20/carton)

#### Colours\*



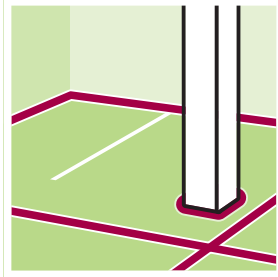
104 Concrete Grey

053 Black

\* Colour swatches are indicative only. For colour samples, please contact our Sales Office on +44 (0)1942 251400.

### SP545

## Flow Applied, Self-Levelling Flooring Sealant



Gunned into the joint and with little help, SP545 will level out to form a neat joint surface.

It can be used with most common substrates such as: concrete, steel, aluminium, fibre glass, etc.

#### Product Benefits

- Complies with ISO11600 25LM
- Abrasion resistant
- Vibration resistant
- Non-yellowing
- UV and weather resistant
- Easy to tool

#### Packaging

600 ml sausages (20/carton)

#### Colours\*

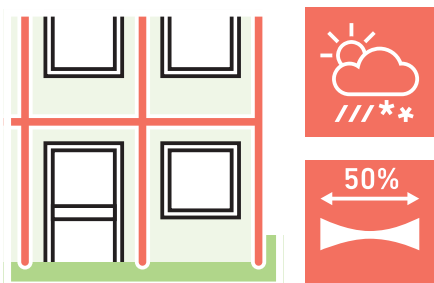


104 Concrete Grey    053 Black

\* Colour swatches are indicative only. For colour samples, please contact our Sales Office on +44 (0)1942 251400.

**FS125**

**Premium Frame & Façade Silicone**



FS125 is a one-part, neutral curing, low modulus, low odour silicone sealant suitable for perimeter joint sealing applications with high movement capability. It has excellent primerless adhesion to multiple surfaces including masonry, brick, aluminium, PVC-U, polycarbonate, polyacrylate, wood, painted wood, glass and glazed surfaces.

**Product Benefits**

- Meets the requirements of EN ISO 11600 G&F 25LM
- Movement capability: up to 50%
- Long-term resistance to weathering, ageing and extra UV protection
- Low modulus formulation ensures minimum stress at joint faces
- Neutral cure: low odour and non-corrosive
- Modern colour range in low sheen finish
- Easy to tool into place and smooth off

**Packaging**

310 ml cartridges (20/carton)

**Colours\***



\* Colour swatches are indicative only. For colour samples, please contact our Sales Office on +44 (0)1942 251400.

## FA101

### Premium Glazing Silicone



FA101 is a one part, neutral curing, low modulus, low odour silicone sealant for sealing around frames and glazing units. It demonstrates excellent primerless adhesion to many common building substrates such as glass, polyacrylate, polycarbonate, painted wood, varnished wood, anodised aluminium, and forms an excellent waterproof seal.

#### Product Benefits

- Abrasion resistant
- Paintable
- Long term resistance to weathering ageing and extra UV protection
- Neutral curing – low odour and non corrosive
- Beautiful to use
- Contains fungicide

#### Packaging

310 ml cartridges (20/carton)

#### Colours\*



432 Transparent

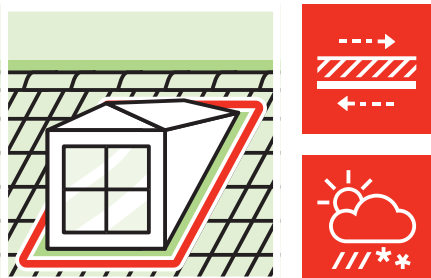
426 Pure White

240 Middle Brown

051 Black



\* Colour swatches are indicative only. For colour samples, please contact our Sales Office on +44 (0)1942 251400.

**FA160****Lead Sealant**

FA160 is a neutral curing silicone based on alkoxy. It contains fungicide for extra protection.

FA160 is specifically formulated for sealing lead flashings into chases cut into brick, stone and concrete around external building and roofing features. The product is chemically compatible with most construction materials and cures to give a finished joint that is superior to traditional mortar based solutions, in terms of seal quality, life expectancy and movement accommodation and appearance.

**Product Benefits**

- Contains fungicide
- Bonds to lead, mortar, concrete and brick
- Easy to tool off
- Long-term resistance to weathering UV and ageing

**Packaging**

310 ml cartridges (20/carton)

**Colour\***

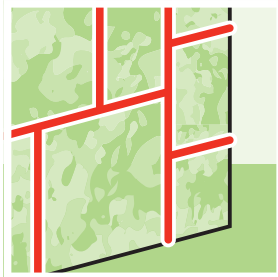
197 Lead



\* Colour swatches are indicative only. For colour samples, please contact our Sales Office on +44 (0)1942 251400.

## FA870

### Premium Natural Stone Silicone



FA870 is a non-staining, neutral curing silicone sealant. It provides long term elastic sealing of connection and movement joints between natural stones such as granite, slate, terrazzo, porphyry, limestone, travertine, sandstone, quartzite, marble, etc. as well as for connection joints with other conventional materials like concrete, ceramics, metals, glass, PVC and primed wood.

#### Product Benefits

- Non-staining formulation for natural stone
- Long-term resistance to weathering, ageing and UV
- Contains fungicide to prevent mould growth
- Rapid curing formulation - skins within 10- 20 minutes

#### Packaging

310 ml cartridges (20/carton)

600 ml sausages (20/carton)

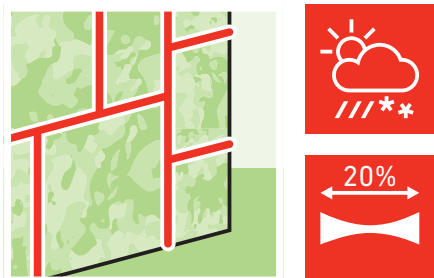
#### Colours\*



\* Colour swatches are indicative only. For colour samples, please contact our Sales Office on +44 (0)1942 251400.

**FA880**

**Premium Natural Stone Silicone Matt**



FA880 has been formulated for the long term elastic sealing of movement joints between natural stone such as granite, slate, terrazzo, porphyry, limestone, travertine, sandstone, quartzite, marble, etc., as well as for joints with other construction materials like concrete, ceramics, metals, glass, PVC and primed wood.

**Product Benefits**

- A high performance silicone sealant developed specifically for the sealing of natural stone whereby illbruck guarantees no migratory staining
- Superb matt finish
- Good resistance to UV light, ageing and weathering
- Contains fungicide to prevent mould growth- suitable for sanitary & swimming pool surround applications
- Rapid curing formulation- skins within 10- 20 minutes
- Chemically neutral, non-corrosive and very low odour
- Compatible with most construction materials

**Packaging**

310 ml cartridges (12/carton)

**Colours\***



\* Colour swatches are indicative only. For colour samples, please contact our Sales Office on +44 (0)1942 251400.

## Tapes & Profiles

### TP300

#### Joint Backer Plus

TP300 is designed as a special joint backing foam but is also suitable for use as a secondary seal in a weatherproof joint. It is suitable in various applications eg masonry, light and heavy weight prefabricated components.

##### Packaging

TP300 is available in a range of sizes. Refer to the product data sheet for full details.



### TP600

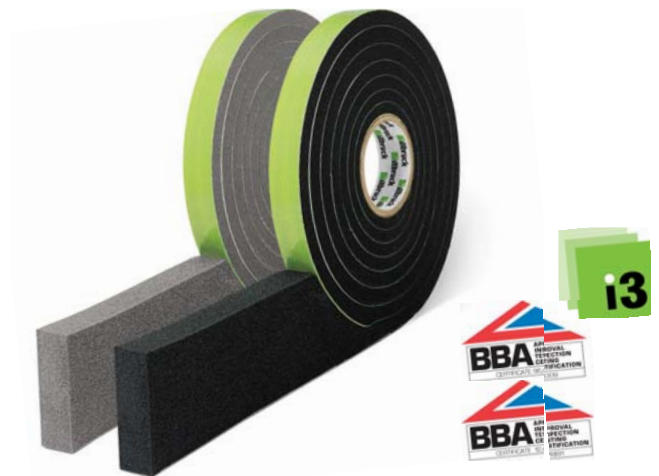
#### Compriband 600

TP600 is an open-cell, flexible polyurethane foam sealant, impregnated with a flame retardant acrylic resin, providing a high performance weather seal. It is pre-compressed and ready for use with a self-adhesive backing to aid location. After positioning, the material expands to create a permanent elastic seal. It remains flexible throughout its life and responds to the expansion/contraction cycles caused by thermal and structural movement.

TP600 is designed for use in a wide variety of movement joints including window perimeter seals and other applications.

##### Packaging

TP600 is available in a range of sizes. Refer to the product data sheet for full details.



### PR102

#### Backer Rod

PR102 is used as a foam backer rod behind the sealant joint, for exterior and interior use. When positioned correctly it ensures correct joint dimensions. PR102 avoids 3-sided adhesion, allowing the joint to move more efficiently.

##### Packaging

PR102 is available in a range of sizes. Refer to the product data sheet for full details.





**AA301****Smoothing/Tooling Liquid**

AA301 helps achieve a better finish on the sealant when tooling off. Just spray on the freshly gunned silicone and smooth off the sealant in the normal way with the smoothing tool. Far better than washing up liquid or common alternatives!

Please note, when tooling natural stone, dip the tool in the liquid to avoid leaving water marks on the stone.

One bottle of spray is extremely economical and will last a very long time.

**Packaging**

750 ml spray bottle (12/carton)

**AA311****Jointing Tools**

AA311 is a tooling kit contained in a small box. There are 3 tools with 6 different profiles to choose from in each box. They are made of high quality plastic to give an excellent finish.

**Packaging**

3 per box (6 different profiles)

**AA400****Anti-Mould Spray**

AA400 can be sprayed onto mould to remove it, and will also prevent further mould from forming for a significant amount of time. If mould persists, please contact tremco illbruck technical department.

**Packaging**

500 ml spray bottle (12/carton)



## Primers & Cleaners

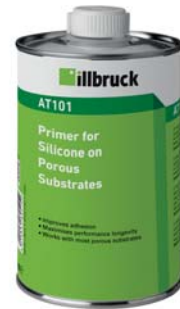
### AT101

#### Primer for Silicone on Porous Substrates

AT101 improves the adhesion of weathertight sealants onto various porous substrates. It is recommended that in order to ensure satisfactory adhesion, a test area is checked prior to proceeding with the complete application.

##### Packaging

500 ml tin (12/carton)



### AT115

#### Cleaner for Plastics

AT115 is ideal for cleaning and degreasing sensitive surfaces such as plastics, painted and powder-coated components as well as metals.

##### Packaging

1 litre tin (10/carton)



### AT120

#### Cleaner/Primer for Silicones

AT120 is a cleaner primer for silicones that cleans and primes in one operation

##### Packaging

500 ml tin (12/carton)



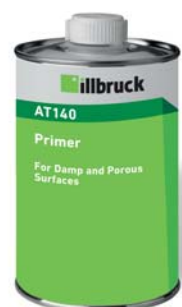
### AT140

#### Primer for Hybrids on Porous Substrates

AT140 is used to give enhanced adhesion of SP sealants to substandard substrates, or where significant movement is anticipated.

##### Packaging

500 ml tin (12/carton)



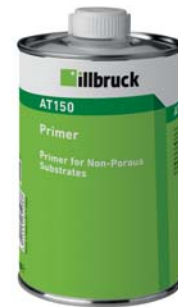
### AT150

#### Primer for Hybrids on Non-Porous Substrates

AT150 Primer is for use on hard and non-absorbent surfaces to improve the adhesion of SP sealants.

##### Packaging

500 ml tin (12/carton)



### AT160

#### Cleaner/Primer for Hybrids

AT160 is a cleaner primer for hybrids that cleans and primes in one operation.

##### Packaging

500 ml tin (12/carton)



### AT200

#### Cleaner/Primer for Silicones

AT200 is a blend of solvents for cleaning and degreasing joint edges and adhesive surfaces and for cleaning working tools.

##### Packaging

500 ml tins (10 per box)



## Applicators

**AA834**

### Cartridge Gun 400 Standard


1.2 kN
Ratio 7:1



This standard cartridge gun has an excellent combination of price and quality. For small projects and occasional use, it's an ideal gun to use.

#### Specification

<b>Auto Pressure Release</b>	No
<b>Soft Grip</b>	No
<b>Handle Material</b>	Epoxy coated aluminium
<b>Frame Material</b>	Epoxy coated steel
<b>Item N°</b>	<b>Suitable for</b> <b>Dimensions</b>
351429	310-400 ml cartridges 368 x 187 x 54 mm

**AA854**

### Cartridge Gun 400 Pro

	
2.5 kN	1 yr Warranty
Ratio 12:1	



This high quality gun has an excellent combination of thrust and ratio; so, it is extremely useful when many linear metres per day need to be applied, for example with our FA870 and FA880 façade sealants.

#### Specification

<b>Auto Pressure Release</b>	Yes
<b>Soft Grip</b>	Yes
<b>Handle Material</b>	Epoxy coated aluminium
<b>Frame Material</b>	Epoxy coated steel
<b>Item N°</b>	<b>Suitable for</b> <b>Dimensions</b>
340861	310 - 400 ml cartridges 388 x 213 x 59 mm

**AA936**

### Sausage Gun 600 Standard


1.5 kN
Ratio 10:1



This standard sausage gun has an excellent combination of price and quality. For small projects and occasional use, it's an ideal gun to use.

#### Specification

<b>Auto Pressure Release</b>	No
<b>Soft Grip</b>	No
<b>Handle Material</b>	Glass reinforced nylon
<b>Barrel Material</b>	ABS polymer
<b>Item N°</b>	<b>Suitable for</b> <b>Dimensions</b>
342804	600 ml sausages 486 x 203 x 69 mm

**AA956**

### Sausage Gun 600 Pro Combi

	
2.5 kN	1 yr Warranty
Ratio 12:1	



This high quality gun has an excellent combination of thrust and ratio; so, it is extremely useful when many linear metres per day need to be applied, for example with our SP525 façade sealant.

#### Specification

<b>Auto Pressure Release</b>	Yes
<b>Soft Grip</b>	Yes
<b>Handle Material</b>	Epoxy coated aluminium
<b>Barrel Material</b>	Anodised aluminium
<b>Item N°</b>	<b>Suitable for</b> <b>Dimensions</b>
342803	310 - 400 ml cartridges 400 - 600ml sausages 484 x 213 x 69 mm

## SG300

### Spectrem 2 - High Performance Silicone Sealant

TREMCO SG300 is a versatile, high performance silicone sealant which reacts with atmospheric moisture to produce a flexible silicone rubber seal, ideal for a wide variety of general purpose joint sealing and glazing applications including 2-sided structural bonding. SG300 provides exceptional cure stability. Capable of taking extension, compression, transverse and longitudinal movements, SG300 resists severe environmental conditions such as wind loading, wind driven rain, snow and sleet, and is impervious to acid rain, ozone, ultraviolet light and extreme temperature variations. Because of its excellent adhesive qualities, SG300 provides the long-term performance required for demanding weatherproofing applications. SG300 is recommended for use on both new construction and renovation projects.

#### Product Benefits

- Exceptional weather resistance: Including UV and ozone exposure with an anticipated life of 30 years
- Movement capability: 25%
- Good adhesion without primer to most common substrates
- High adhesion strength: Suited for bonding applications including 2-sided structural glazing
- Excellent gunnability: Through wide temperature range
- Stable curing system: Which assures product reliability
- Quick skin formation
- Standards: SG300 meets the requirements of EN ISO 11600 G&F 25HM

#### Packaging

310 ml cartridge (12 per case), 600 ml sausage (20 per case)

#### Colour\*



Black



\* Colour swatches are indicative only. For colour samples, please contact our Sales Office on +44 (0)1942 251400.

## Sealant Guns- Glossary of Terms

### Ratio

The rate in which the plunger will go forward in relation to how far the handle will be squeezed.

### Max Force

The maximum force which will be applied by the plunger of the gun on the cartridge or sausage to push the material out.

### Auto Pressure Release

Permits a small backwards movement of the rod when releasing the trigger. This releases pressure built up in the cartridge and so stops material oozing from the cartridge nozzle.

### Soft Grip

The trigger and the butt are equipped with a soft layer of PVC coating.



### Quality Guarantee

The number mentioned at "quality guarantee" is how many cartridges / sausages the gun can handle without compromising quality.

## FS702

### Water-bourne, Intumescent Acrylic Sealant

FS702 is a one-part fire resistant joint sealant. FS702 cures to give a firm, but flexible seal in low movement fire rated joints, to seal between joints in FB747 FR Coated Batts, substrate to penetration service applications and pointing up of penetration seals.

#### SUBSTRATES

- Masonry to masonry
- Masonry to timber
- Masonry to steel
- FB747 to flexible wall
- FB747 to rigid wall
- Flexible wall to flexible wall
- Flexible wall to rigid floor
- Rigid floor to rigid floor
- Rigid wall to rigid wall

#### Product Benefits

- Can achieve up to 4 hours joint fire resistance tested in accordance with EN 1366-3, EN 1366-4 and ETAG 026
- Ideal for sealing low movement joints- suitable for gaps up to 50 mm wide
- Suitable for rigid and flexible walls
- Used for sealing FB747 Coated Fire Batts
- Acoustics up to 61 dB
- Air seal up to 600 Pa
- Single sided seal tested
- Easily paintable

#### Packaging

310 ml cartridges (12 per box)  
600 ml sausages (12 per box)

#### Colour\*



White



Grey



\* Colour swatches are indicative only. For colour samples, please contact our Sales Office on +44 (0)1942 251400.

## FS703

### Neutral Cure, Fire-Rated Silicone

FS703 Silicone Sealant is a single-part alkoxy-based fire resistant, elastomeric, neutral cure silicone sealant. Provides up to 4 hours fire protection in internal and external building gaps and movement joints. FS703 is designed for joints in compartment walls and floors, gaps between frames and structures and at junctions of different materials.

#### SUBSTRATES

- Masonry to masonry
- Masonry to timber
- Masonry to steel

#### Product Benefits

- Can achieve up to 4 hours joint fire resistance tested in accordance with EN 1366-4
- CE Marked ETAG 026 and Classification 13501:2
- Suitable for gaps up to 50 mm wide
- Assumed working life of 10 years (ETAG 026)
- Certified 3rd party accreditation
- Air Permeability 600Pa EN1026
- Seal ratio at 2:1
- Neutral cure silicone sealant

#### Packaging

310 ml cartridges (12 per box)

600 ml sausages (12 per box)

#### Colour\*



White



Grey



\* Colour swatches are indicative only. For colour samples, please contact our Sales Office on +44 (0)1942 251400.

# Primer Selector

Substrate	FA101
<b>Bricks, Concrete &amp; Stone</b>	
Natural Stone	
Concrete	AT101
Fibre Concrete	AT101
Brick	+, AT101
Plaster	AT101
<b>Metals</b>	
Aluminium	+
Aluminium Anodised	+
Aluminium Powder Coated	+, Test
Galvanised Steel	+, AT105, AT120
Stainless Steel	
Copper	+
Brass	+
Iron	+, AT105, AT120
<b>Glass</b>	
Glass	+
<b>Plastics</b>	
ABS	+, AT120
Polyamide	AT120
Polycarbonate	AT120, AT105
Polyester GRP	+
Polystyrene	AT120, AT105
Sanitary Acrylic	AT105, AT120
Acrylic Glass PMMA	
PVC Rigid	AT105, AT120
PVC Soft Sheet/Film	+, AT105, AT120
<b>Wood</b>	
Wood Primed	+
Wood Painted	+, AT105, AT120
Wood Stained	+, AT105, AT120
<b>Tiles</b>	
Glazed Tiles	+
Unglazed Tiles	+, AT101
Tiles Reverse Side	
<b>Others</b>	
Enamel	

+ = good adhesion can normally be expected without primer.

Reference numbers (e.g. AT111) show the type of illbruck primer required.

Where there is no result listed according to substrate please contact technical support.



FA600	FA870	FA880	FS125	FS500	SP525	SP540
	+, AT101	+, AT101				
AT101	+, AT101	+, AT101	+, AT101	+, AT101	+, AT140	+, AT140
		AT101				
+, AT101	+, AT101	+, AT101	+, AT101	+, AT101	AT140	AT140
	AT101	AT101				
+	+, AT105, AT120	+, AT105, AT120	+	+	+, AT150	+, AT150
+	+, AT105, AT120	+	+	+	+, AT150	+
+, Test	+, Test	+, Test	+, Test, AT105, AT160, AT120	+, Test, AT105, AT160, AT120	+, Test	+, Test
+, AT105, AT120		+, AT105, AT120	+, AT105, AT120	+, AT105, AT120	+, AT150	+, AT150
	AT105, AT120, AT160	+, AT105, AT120	+, AT105, AT120, AT160	+, AT105, AT120, AT160	+, AT150	+, AT150
	AT105, AT120,	+	+		AT150	+
	AT105, AT120	+	+		AT150	+
+, AT105, AT120	AT105, AT120	+, AT105, AT120	AT105, AT120	AT105, AT120	AT150	+, AT150
	+	+	+	+	+	+
+, AT120			+, AT120	+, AT120	+, AT150	AT150
AT120			+	+	+, AT150	+, AT150
+	+	+	+	+	+	+
		AT105, AT120	AT105, AT120		+, AT150	+, AT150
AT105, AT120	+, AT105	AT105, AT120	+	+	+, AT150	+, AT150
					+, AT150	+, AT150
AT105, AT120	AT105, AT120	AT105, AT120	+, AT105, AT160	+, AT105, AT160	+, AT150	+, AT150, AT160
		+, AT105, AT120			+, AT150	+, AT150
+		+				
+, AT105, AT120	AT105, AT120, AT160	+, AT105, AT120				
+, AT105, AT120	AT105, AT120	+, AT105, AT120				
	+	+	+			
	AT101	+, AT101				
			+		AT140	AT140
	+, AT105, AT120	+				

to improve adhesion.  
 nical department.

# Joint Design Layout

## Joint Design Considerations

- Joint design to be in accordance with BS 6093.
- For the purposes of joint width calculation in BS 6093, the MAF of the sealant can be found on the appropriate technical data sheet.
- Minimum joint width should normally not be less than 5 mm.
- Typical maximum joint width of 30 mm, however for all large joints (greater than 30 mm), please contact tremco illbruck to discuss project specifics.
- Width to depth ratio should typically be 2:1.
- Minimum width to depth ratio should typically be 1:1. Please note MAF is reduced at smaller width to depth ratios.
- The minimum contact area with any substrate (including for fillet joints) should be determined by the quality of the bond. If in doubt please contact tremco illbruck.
- PE backer rod should be used in all movement joint applications.

## Relevant BS, DIN and ISO Standards

### BS6093:2006

Design of joints and jointing in building construction

### BS EN 15651-1:2010

Sealants for non-structural use in joints in buildings- façades

### BS EN 15651-2:2010

Sealants for non-structural use in joints in buildings- glazing

### BS EN 15651-3:2010

Sealants for non-structural use in joints in buildings  
- sanitary joints

### BS EN 15651-4:2010

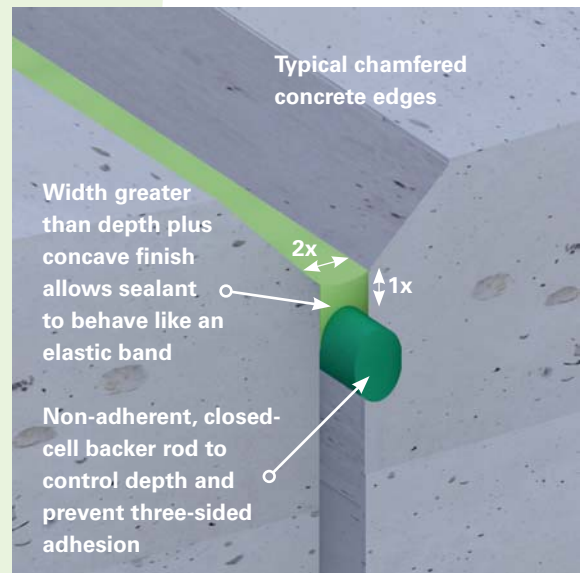
Sealants for non-structural use in joints in buildings  
- floor joints

### DIN 18540:2006:12

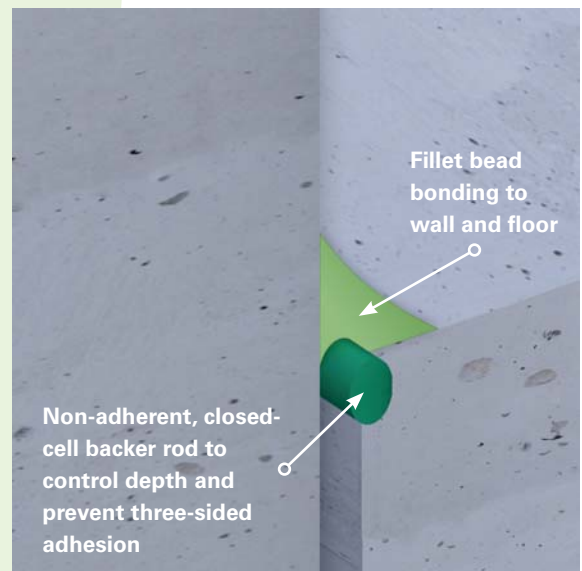
Sealing for façade joints in building construction with sealants

### EN ISO 11600:2004

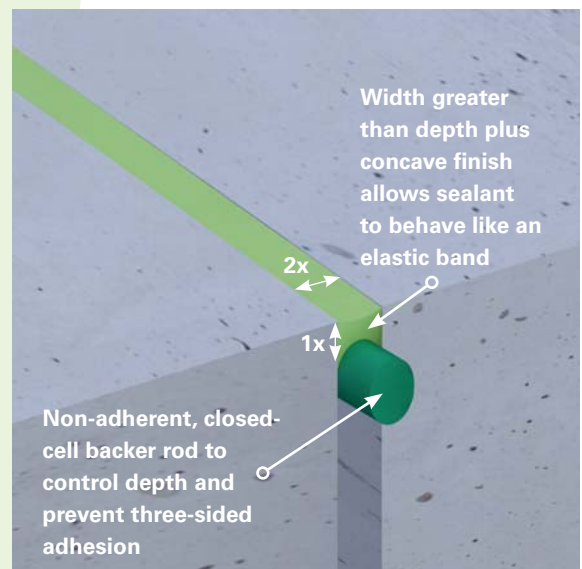
Building construction. Classification and requirements for sealants.



Joint between precast concrete panels



Fillet joint where floor meets wall



Control joint in concrete floor

## tremco illbruck and its strong brands



tremco illbruck is a European manufacturer and service provider of high-performance sealing, bonding, flooring, waterproofing, and passive fire protection for the construction and manufacturing industries. We ensure that your processes become faster, smarter, more efficient. And more enjoyable. Every time.



illbruck adds perfection – to all your sealing and bonding projects. Be it windows, façades, interiors and exteriors, a major construction scheme or a minor refurbishment job. We offer the right set of products, services and expertise to lessen your workload and improve the overall climate of buildings-making it perfect.



Nullifire helps reduce the complexities of passive fire protection. Fire safety regulations are complicated and potentially involve the threat of liability. To cope with these challenges we deliver a focused range of rigorously tested products that cover a wide array of passive fire protection applications. Nullifire's expert advice, support and training make for smart and simple solutions in passive fire protection.



TREMCO stands for lasting performance for flooring, waterproofing and in-plant glazing. The construction world is faced with ever more exacting requirements and longevity is essential for every application. We offer all the services and support you need, from specification reports to on-site support. With our nine decades of market experience we help you achieve the results you are looking for – with excellent lasting performance.





Unit 210 holly road, Western Industrial Estate.  
Naas Road, Dublin12.  
Ph. 01-424 7200 email: [info@nationalseal.ie](mailto:info@nationalseal.ie)  
Fax. 01-4502371 Web: [www.nationalseal.ie](http://www.nationalseal.ie)