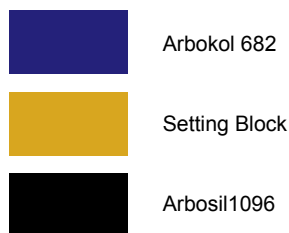
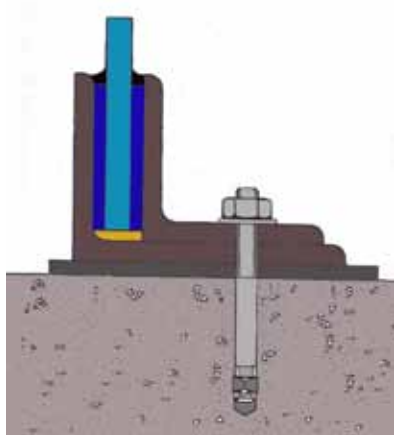


ARBOKOL 682

POURING GRADE FOR BALUSTRADE INSTALLATION

DESCRIPTION

Arbokol 682 Pouring Grade is a Two-Part Epoxy Polysulphide Sealant, which when the components are mixed together, cures to form an extremely tough sealant with a small degree of movement accommodation. Arbokol 682 Pouring Grade has a self levelling formulation for quick and easy of use. The product has good adhesion to glass, concrete, stone, metals and many other common building substrates.



MAIN APPLICATIONS

Joint Preparation

The joint surfaces must be clean, dry and free from all contamination. The surfaces should be degreased using the appropriate Arbo Cleaner.

All joint preparation, priming, and sealant application should be carried out in accordance with BS 8000 Part 16, the British Standard for the sealing of joints in buildings using sealants. Also see BS6180:1999 for balustrades

Mixing

The ratio of base: curing agent controls the performance properties of Arbokol 682 Pouring Grade and tins are filled off to an exact mixing ratio. It is vital therefore that the whole contents of the Curing Agent tin are added to the Base tin. The two components must be thoroughly mixed to ensure complete homogeneity.

Application

The usual application method once mixed is to create a lip on the tin and pour directly into the channel to be filled. Other application measures such as the use of empty cartridge dispensers and hand barrel guns are suitable.

GLASS BALUSTRADE INSTALLATION PROCEDURE

1. Insert setting blocks at the bottom of the channel.
2. Ensure all exit points are sealed using either Arbokol 682 Gun Grade or over size Polyethylene foam to prevent run out.
3. Insert the glass and locate it on the setting blocks.
4. Insert hardwood packers either side of the glass firmly within the centre of the channel. The packers are usually in the form of back to back wedges on both sides of the glass to centralise the glass. It is important to ensure that a gap is left between the adjacent glass panels to avoid shock transfer.
5. Apply Arbokol 682 Pouring Grade and allow the channel to fill ensuring that the void between the glass and channel is completely filled.
6. For external balustrades Arbokol 682 Pouring Grade should be recessed at least 5mm below the sight line and be capped with Arbosil 1096 to form a chamfered weather seal.

NB Ensure Arbokol 682 Pouring Grade is protected during curing from rain or other water contact. Primer may be required on some substrates for Arbosil 1096 to achieve a satisfactory bond.

QUANTITY

Guide lines for glass balustrade installation.

For average sized balustrades it is estimated that one litre will fill one metre run of section.

For accurate quantities we recommend you carry a site trial.

PACKAGING

1.2 Litre Set, with separate tins for Base and Curing Agent.

COLOURS

Grey

STORAGE LIFE

6 months in original unopened packaging stored in a cool, dry place out of direct sunlight.

HEALTH AND SAFETY

Base component is Polysulphide based and Curing Agent contains Epoxy resin. Both components require careful handling. Please consult MSDS's for each component before use.



Unit 210 Holly Road, Western Industrial Estate.
Naas Road, Dublin 12
Ph 00353-1-4565170 Fax 00353-1-4502371
Email: info@nationalseal.ie web: www.nationalseal.ie

ARBOKOL 682
POURING GRADE FOR BALUSTRADE INSTALLATION**TECHNICAL DATA**

Work Life (Typical at 20° C):	1½ - 2 hours
Application Temperature:	+ 5° C to + 40° C
Service Temperature:	- 15° C to + 70° C
Typical Shore A Hardness (cured at 20° C):	95
Typical Shore D Hardness (cured at 20° C):	50
Cure Rate at 20° C/65 % RH:	7 days. At lower temperatures cure rate will be slowed down.
Chemical Resistance:	Resistant to most dilute acids and alkalis, petrol, diesel, jet fuel, vegetable oils and many common solvents.
UV Resistance:	Very Good
Service Life:	20 years
Movement Accommodation:	Butt joints (movement in tension and compression): 5 %.
Force @ Break (7 days cure, tests on a 12 x 12 x 50mm joint):	2500N

ACCESSORIES**Cleaners**

Arbo Cleaner No.17- 1 Litre Tin (Xylene based – not suitable for use with plastics or delicate finishes)

Arbo Cleaner No. 16 - 1 Litre Tin (Alcohol Based)

Ancillary Equipment

Cartridge Dispensers

Plungers

Polyethylene Nozzles

Caulking Guns

QUANTITY ESTIMATOR

Joint Size (mm)	Metres/litre
6 x 6	27.8
9 x 6	18.5
12 x 9	9.3
18 x 10	5.6
25 x 10	4.0

Important: The information in this leaflet is given in good faith and based on results gained from experience and tests. However, all recommendations or suggestions are made without guarantee since the conditions of use are beyond our control. Goods are supplied subject to the Company's terms and conditions of sales, a copy of which is available on request.

Arbo sealants are manufactured in the U.K. by Adshead Ratcliffe.

**National
Seal Systems
Limited**

Unit 210 Holly Road, Western Industrial Estate.
Naas Road, Dublin 12
Ph 00353-1-4565170 Fax 00353-1-4502371
Email: info@nationalseal.ie web: www.nationalseal.ie